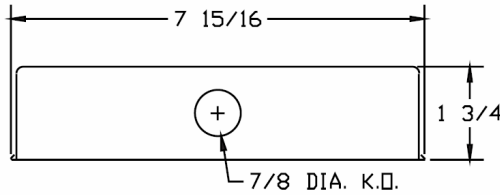


7. Task & Wall Brackets

Parallel Under Cabinet Fixture

UC2

DIMENSIONS



Dimensions are subject to change. For critical applications, verify all dimensions with factory.



ORDERING

Available in 24", 36" and 48" in 2 lamp parallel configurations, T8 and T5. Thin profile for unobtrusive under cabinet mounting. Offers efficient on-task symmetric illumination in areas obscured from overhead lighting. Keyhole slots on housing for easy installation. Optional occupancy sensors, convenience outlet and switch to accommodate any requirements. Knockouts on ends and back of housing for surface conduit and continuous row mounting.

HOUSING

Die formed heavy gauge steel. Housing and ends are one continuous piece.

ELECTRICAL

Energy saving electronic ballasts comply with Federal Energy Efficiency standards. Ballasts are <10% THD and include 5 year manufacturer's warranty. Ballasts operate on 120V-277V (UNV) unless specified otherwise.

SHIELDING

Ribbed opal acrylic lens for soft pleasing light.

FINISH

Standard finish is baked white enamel. Optional finishes are available (consult factory). Interior reflecting surfaces are baked white enamel with a minimum 89% reflectance.

CERTIFICATION

All units bear UL label. Made in U.S.A. Suitable for damp location. ARRA and BAA compliant.

<u>MODEL</u>	<u>LAMPS</u>	<u>LENGTH</u>	<u>VOLTAGE</u>
UC2	2-F17T8	24"	120
	2-F25T8	36"	277
	2-F32T8	48"	UNV
	2-F14T5	24"	
	2-F21T5	36"	
	2-F28T5	48"	

OPTIONS:

- CO – Convenience Outlet
- RSW – Rocker Switch
- OC – Occupancy Sensor (Bottom/Side Mount)
- OC505 – Wattstopper® FS-505 Occupancy Sensor
- EM- Emergency Battery Pack
- DM- Dimming Ballast (Specify type)

JOB NAME:

FIXTURE TYPE:

MODEL NO:

