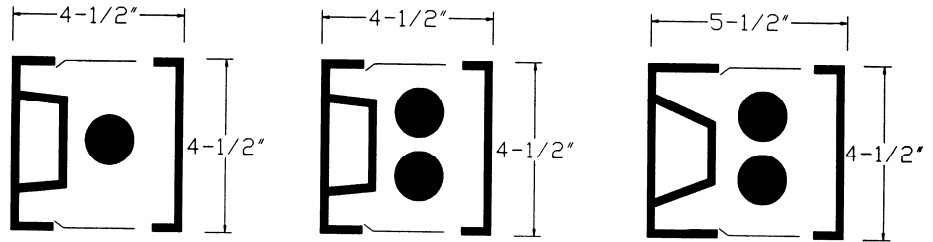




DIMENSIONS



Dimensions are subject to change. For critical applications, verify all dimensions with factory.

ORDERING

<u>MODEL</u>	<u>LAMP QTY</u>	<u>LENGTH</u>	<u>TYPE</u>	<u>VOLTAGE</u>
W9	1	24"	T8/EB	120
	2	36"	T5/EB	277
		48"	T5HO/EB	UNV*
			T12HO	
			T12VHO	

Available in 2', 3', and 4' lengths, in 1 and 2 lamp configurations, T5, T5/HO, T8, T12 T12HO, T12VHO. Attractive luminaire is ideal for installation in most commercial, residential, and institutional areas where direct and indirect lighting is preferred. Contemporary style unit allows for total flexibility for matching or enhancing any décor with designer created fascias (supplied by others). Optional factory supplied oak or walnut wood or metal painted fascias are available. Steel brackets that are provided fasten to back of baffle and clip onto end plates. For individual or continuous row mounting. Optional convenience outlet and switch for over bed or utility applications.

HOUSING

Die formed heavy gauge steel housing and end plates for extra strength and rigidity.

ELECTRICAL

Energy saving and electronic class P, HPF ballasts comply with Federal Energy Efficiency standards.

FINISH

All parts finished with high gloss baked white enamel with minimum 89% reflectance applied over iron phosphate pretreatment for maximum adhesion and rust resistance.

CERTIFICATION

All units bear UL and Made in U.S.A. labels.

OPTIONS:

- WHT** – White Metal Fascia
- CO** – Convenience Outlet
- SW** – Pull Chain
- EM--** Emergency Battery Pack
- DM-** Dimming Ballast

JOB NAME:
FIXTURE TYPE:
MODEL NO:

