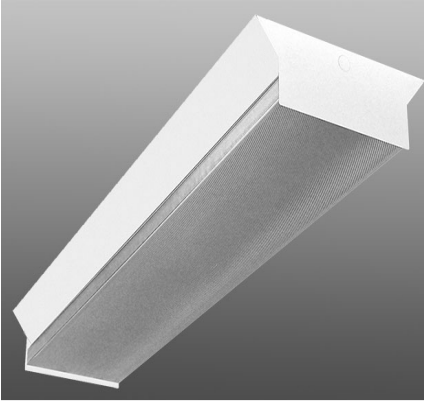


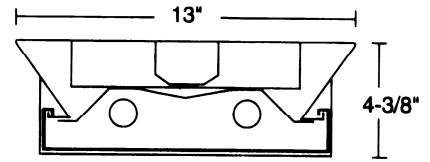
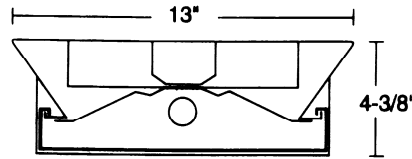
2. Surface

13" Wide Wraparound

S12



DIMENSIONS



Dimensions are subject to change. For critical applications, verify all dimensions with factory.



ORDERING

Specification grade wrap around is available in 4' and 8' lengths, 1 and 2 lamp configuration in T8 and T5. 13" wide housing permits replacement of old 12" wide surface fixtures without costly ceiling repairs. Ideal for schools, hospitals, institutions, and any application where high efficiency and task appropriate illumination is essential. For individual or continuous row mounting. Sufficient knockouts for surface or pendant mounting. Available with energy efficient reflectors in High Efficiency Aluminum (95% reflectance), Specular Aluminum (87% reflective) and High Efficiency White (92% reflectance.)

HOUSING

Die formed 20 gauge steel ribbed for uniformity and rigidity.

ELECTRICAL

Energy saving electronic ballasts comply with Federal Energy Efficiency standards. Ballasts are <10% THD and include 5 year manufacturer's warranty. Ballasts operate on 120V-277V (UNV) unless specified otherwise.

SHIELDING

100% clear acrylic prismatic bottom with linear side prisms.

FINISH

All parts finished with high gloss baked white enamel with minimum 89% reflectance applied over iron phosphate pretreatment for maximum adhesion and rust resistance.

CERTIFICATION

All units bear UL label. Suitable for damp location. Made in U.S.A. ARRA and BAA compliant.

<u>MODEL</u>	<u>LAMP QTY</u>	<u>WATTAGE/TYPE</u>	<u>VOLTAGE</u>
S12	1	32T8	120
	2	28T5	277
4' unit		54T5HO	UNV
8' unit	2	32T8-8TD	
	4	28T5-8TD	
		54T5HO-8TD	

OPTIONS:

EM – Emergency

DM – Dimming (Specify Type)

SA95 – High Efficiency Aluminum Reflector

SA87 – Specular Aluminum Reflector

WH92 – High Efficiency White Reflector

JOB NAME:

FIXTURE TYPE:

MODEL NO:

