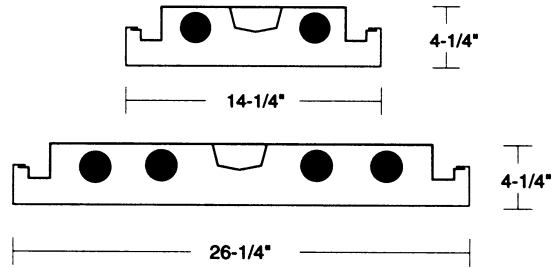


DIMENSIONS



Dimensions are subject to change. For critical applications, verify all dimensions with factory.

ORDERING

Available in 1x2, 1x4, 2x2, and 2x4 sizes, in 2, 4, and 6 lamp configurations, T8, T5, and BIAx. Consult factory for 4x4 size. One piece seamless cast re-entrant acrylic diffuser provides uniform light diffusion with minimal brightness and contrast. Diffuser hinges from either side with no visible hardware. Unique floating design of diffuser provides a modern appearance. Matte black housing is available as an option. Designed for individual, surface, or pendant mount.

HOUSING

Die formed heavy gauge steel housing welded into one piece for maximum strength.

ELECTRICAL

Energy saving electronic ballasts comply with Federal Energy Efficiency standards. Ballasts are <10% THD and include 5 year manufacturer's warranty. Ballasts operate on 120V-277V (UNV) unless specified otherwise.

FINISH

Premium coat baked white enamel paint used on all surfaces. Matte white baked enamel available on all exterior surfaces.

CERTIFICATION

All units bear UL label. Made in U.S.A. Suitable for damp location. ARRA and BAA compliant.

<u>MODEL</u>	<u>LAMPS</u>	<u>VOLTAGE</u>	<u>OPTIONS</u>
LPX-1 1x2 unit	2-17T8	120	EM – Emergency DM – Dimming BLK – All Black Housing
	1-31T8U	277	
	2-14T5	UNV	
LPX-1 1x4 unit	2-32T8		
	4-32T8		
	2-28T5		
	4-28T5		
LPX-2 2x2 unit	4-17T8		
	6-17T8		
	2-32T8U		
	4-14T5		
	2-40BXTT5		
LPX-2 2x4 unit	4-32T8		
	6-32T8		
	4-28T8		
	6-28T8		



JOB NAME:
FIXTURE TYPE:
MODEL NO: