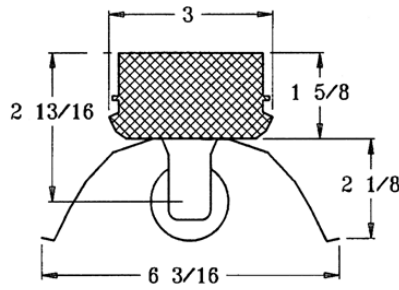


**DIMENSIONS**



Dimensions are subject to change. For critical applications, verify all dimensions with factory.



**ORDERING**

Available in 2', 3', 4', 6' and 8' lengths in 1 lamp configurations, T8, T5, and T5HO. Combination snap in end plates double as couplers, eliminate the need for extra hardware in continuous row applications. Snap on cover makes installation quick and easy. Suitable for low density ceiling applications. Symmetric, asymmetric, and light shield reflectors available. For surface or pendant mounting, individual or continuous row mounting.

**HOUSING**

Die formed heavy gauge steel with knockouts for stems or chain hangers.

**ELECTRICAL**

Energy saving electronic ballasts comply with Federal Energy Efficiency standards. Ballasts are <10% THD and include 5 year manufacturer's warranty. Ballasts operate on 120V-277V (UNV) unless specified otherwise.

**REFLECTOR**

High Efficiency Aluminum reflector is UV inhibited and 95% reflective, making the product superior in retrofit projects by allowing lamping to be decreased while maintaining light levels. Front reflecting structure is protected with a non-yellowing acrylic coating, and the reflective film is then formed according to a custom optical design by computer controlled equipment to insure precision fabrication.

**FINISH**

All metal parts pre-painted with high gloss baked white enamel with minimum 89% reflectance applied over iron phosphate pretreatment for maximum adhesion and rust resistance.

**CERTIFICATION**

All units bear UL label. Made in U.S.A. Suitable for damp location. ARRA and BAA compliant.

<u>MODEL</u>	<u>LAMP QTY</u>	<u>WATTAGE/TYPE</u>	<u>VOLTAGE</u>
<b>SXC</b>	1	17T8 14T5 24T5HO	120 277 UNV
2' unit			
3' unit	1	25T8 21T5 39T5HO	
4' unit	1	32T8 39T5 54T5HO	
6' unit	1	25T8-6TD 21T5-6TD 39T5HO-6TD	
8' unit	1	32T8-8TD 39T5-8TD 54T5HO-8TD	

**OPTIONS:**

- EM** - Emergency
- DM** - Dimming
- SR** - Symmetric Reflector
- AR** - Asymmetric Reflector
- LS** - Light Shield

JOB NAME:

FIXTURE TYPE:

MODEL NO:

