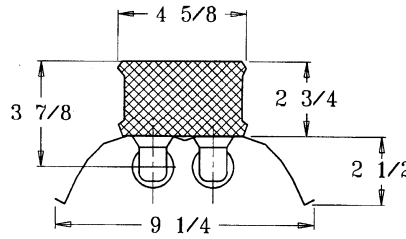


DIMENSIONS



Dimensions are subject to change. For critical applications, verify all dimensions with factory.



ORDERING

Available in 2', 3', 4', 6', 8', and 16' lengths, in 1, 2, and 3 lamp configurations. Combination snap in end plates double as couplers, eliminate the need for extra hardware in continuous row applications. Snap on cover makes installation quick and easy. For surface, pendant, or chain mounting, individual or continuous rows. Symmetric, asymmetric, and wall wash reflectors available.

HOUSING

Die formed heavy gauge steel with knockouts for stems or chain hangers.

ELECTRICAL

Energy saving electronic ballasts comply with Federal Energy Efficiency standards. Ballasts are <10% THD and include 5 year manufacturer's warranty. Ballasts operate on 120V-277V (UNV) unless specified otherwise.

REFLECTOR

High Efficiency Aluminum reflector is UV inhibited and 95% reflective, making the product superior in retrofit projects by allowing lamping to be decreased while maintaining light levels. Front reflecting structure is protected with a non-yellowing acrylic coating, and the reflective film is then formed according to a custom optical design by computer controlled equipment to insure precision fabrication.

FINISH

All metal parts pre-painted with high gloss baked white enamel with minimum 89% reflectance applied over iron phosphate pretreatment for maximum adhesion and rust resistance.

CERTIFICATION

All units bear UL label. Made in U.S.A. Suitable for damp location. ARRA and BAA compliant.

<u>MODEL</u>	<u>LAMP QTY</u>	<u>WATTAGE/TYPE</u>	<u>VOLTAGE</u>
SX2C 2' unit	1	17T8	120
	2	14T5	277
	3	24T5HO	UNV
3' unit	1	25T8	
	2	21T5	
	3	39T5HO	
4' unit	1	32T8	
	2	39T5	
	3	54T5HO	
6' unit	2	25T8-6TD	
	4	21T5-6TD	
	6	39T5HO-6TD	
8' unit	2	32T8-8TD	
	4	39T5-8TD	
	6	54T5HO-8TD	

OPTIONS:

- EM** - Emergency
- DM** - Dimming
- SR** - Symmetric Reflector
- AR** - Asymmetric Reflector
- LS** - Light Shield

JOB NAME:

FIXTURE TYPE:

MODEL NO:

