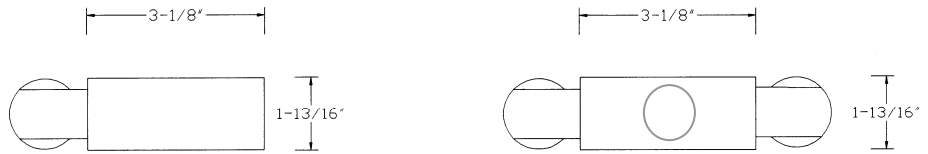


DIMENSIONS



Dimensions are subject to change. For critical applications, verify all dimensions with factory.



ORDERING

Available 24", 36", 48" and 96" lengths, in 1 and 2 lamp configurations, T8, T5 and T5HO. Ultra thin design for cove, coffer, and under counter applications. Snap on cover makes installation quick and easy. Knockouts on channel ends allow for through wiring or end feed. For individual or continuous row mounting.

HOUSING

Die formed heavy gauge steel housing.

ELECTRICAL

Energy saving electronic ballasts comply with Federal Energy Efficiency standards. Ballasts are <10% THD and include 5 year manufacturer's warranty. Ballasts operate on 120V-277V (UNV) unless specified otherwise.

FINISH

All metal parts pre-painted with high gloss baked white enamel with minimum 89% reflectance applied over iron phosphate pretreatment for maximum adhesion and rust resistance.

CERTIFICATION

All units bear UL label. Made in U.S.A. Suitable for damp location. ARRA and BAA compliant.

<u>MODEL</u>	<u>LAMP QTY</u>	<u>WATTAGE/TYPE</u>	<u>VOLTAGE</u>
SS	1	17T8	120
	2	14T5	277
24" unit		24T5HO	UNV
36" unit	1	25T8	
	2	21T5	
		39T5HO	
48" unit	1	32T8	
	2	39T5	
		54T5HO	
96" unit	2	32T8-8TD	
	4	39T5-8TD	
		54T5HO-8TD	

OPTIONS:

- EM** - Emergency
- DM** - Dimming
- NYC** – 20 Guage NYC Housing
- SA95** – High Efficiency Specular Reflector
- SR** – Symmetric Reflector
- AR** – Asymmetric Reflector

JOB NAME:
FIXTURE TYPE:
MODEL NO:

