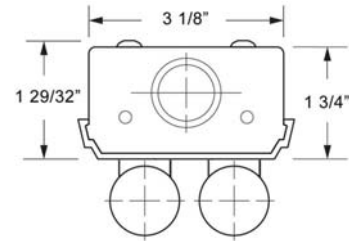
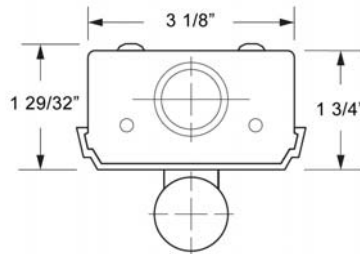


DIMENSIONS



Dimensions are subject to change. For critical applications, verify all dimensions with factory.



ORDERING

Available in 24", 36", 48", 72" and 96" lengths in 1 or 2 lamp configurations, T5, T5HO, and T8. Combination snap in end plates double as couplers, eliminate the need for extra hardware in continuous row applications. Snap on cover makes installation quick and easy. Suitable for low density ceiling applications. Symmetric, asymmetric, and light shield reflectors available. For surface or pendant mounting, individual or continuous row mounting. Available with specular aluminum reflector (87% reflectance) high efficiency white reflector (92% reflectance) or high efficiency specular aluminum reflector (95% reflectance).

HOUSING

Die formed heavy gauge steel housing with ample knockouts for ease of installation.

ELECTRICAL

Energy saving electronic ballasts comply with Federal Energy Efficiency standards. Ballasts are <10% THD and include 5 year manufacturer's warranty. Ballasts operate on 120V-277V (UNV) unless specified otherwise.

FINISH

All parts finished with high gloss baked white enamel with minimum 89% reflectance applied over iron phosphate pretreatment for maximum adhesion and rust resistance.

CERTIFICATION

All units bear UL label. Made in U.S.A. Suitable for damp location. ARRA and BAA compliant.

<u>MODEL</u>	<u>LAMPS</u>	<u>WATTAGE/TYPE</u>	<u>VOLTAGE</u>
S 2' unit	1	17T8	120
	2	14T5	277
		24T5HO	UNV
3' unit	1	25T8	
	2	21T5	
		39T5HO	
4' unit	1	32T8	
	2	28T5	
		54T5HO	
6' unit	1	25T8-6TD	
	2	21T5-6TD	
		39T5HO-6TD	
8' unit	1	32T8-8TD	
	2	28T5-8TD	
		54T5HO-8TD	

OPTIONS

- EM** - Emergency
- DM** - Dimming
- SA95** – High Efficiency Specular Reflector
- SA87** – Specular Reflector
- WH92** – High Efficiency White Reflector
- SR** – Symmetric Reflector
- AR** – Asymmetric Reflector
- LS** – Wall Wash Light Shield



JOB NAME:
FIXTURE TYPE:
MODEL NO: