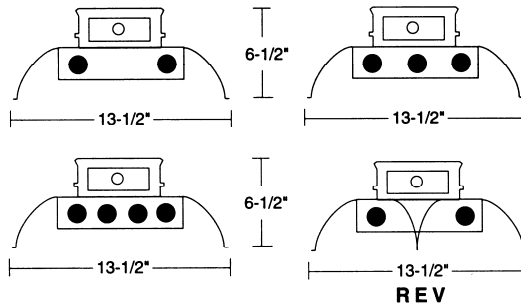


DIMENSIONS



Dimensions are subject to change. For critical applications, verify all dimensions with factory.



ORDERING

Available in 4' and 8' lengths, 2, 3, and 4 lamp configurations, T8 T5 and T5HO. 4' reflectors with full transverse ribs for maximum rigidity are standard in baked white enamel. Reflectors have 15% apertures for comfortable uplight. Solid tops optional. Captive molded fasteners recessed into reflector for flush appearance. Snap on end plate can double as a coupler for continuous row installation. Suitable for mounting individually or in rows. Reflector aligners are supplied with 8' units.

HOUSING

Die formed heavy gauge steel housing with deeply embossed sides for extra strength.

ELECTRICAL

Energy saving electronic ballasts comply with Federal Energy Efficiency standards. Ballasts are <10% THD and include 5 year manufacturer's warranty. Ballasts operate on 120V-277V (UNV) unless specified otherwise.

FINISH

All metal parts finished with premium grade white enamel with minimum 89% reflectance applied over iron phosphate pretreatment for maximum adhesion and rust resistance.

CERTIFICATION

All units bear UL label. Made in U.S.A. Suitable for damp location. ARRA and BAA compliant.

<u>MODEL</u>	<u>LAMP QTY</u>	<u>WATTAGE/TYPE</u>	<u>VOLTAGE</u>
NRE	2	32T8	120
	3	28T5	277
4' unit	4	54T5HO	*UNV
		48T12HO	
	2	32T8-8TD	
	3	28T5-8TD	
8' unit	4	54T5HO-8TD	
	2	96T8HO	
	3	96T8HO	
	4		

OPTIONS:

- EM** - Emergency
- DM** - Dimming
- CC** - Custom Color
- SOLID** – Solid Top Reflector
- REV** –Snap in V Shield (2 Lamp Only)
- WG** – Wire Guard
- *UNV** – Universal Voltage (T5, T5HO, T8 only)



JOB NAME:
FIXTURE TYPE:
MODEL NO: