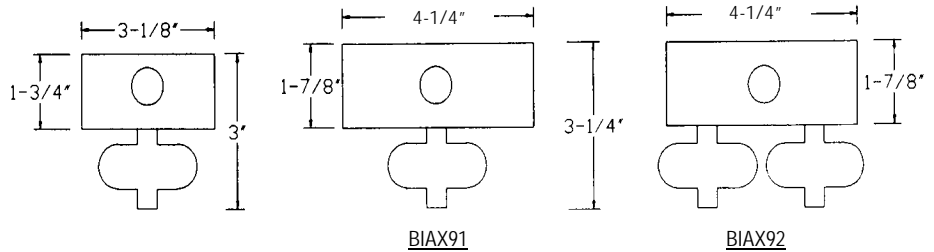
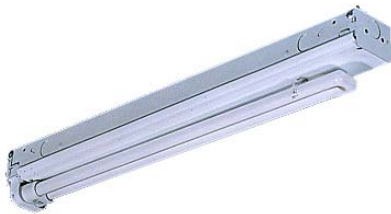


DIMENSIONS



Dimensions are subject to change. For critical applications, verify all dimensions with factory.



ORDERING

Available in 15", 18", 24", and 48" lengths in 1, 2, or 4 BIAX lamp configurations. Specifically designed for the highly efficient BIAX lamp. Provides twice the illumination in half the space. Combination snap in end plates double as couplers, eliminate the need for extra hardware in continuous row applications. Snap on cover makes installation quick and easy. Symmetric, asymmetric, and direct light reflectors available. For surface, pendant, or chain mounting, individual or continuous row mounting. Available with specular aluminum reflector (87% reflectance) high efficiency white reflector (92% reflectance) or high efficiency specular aluminum reflector (95% reflectance).

MODEL	LAMP QTY	WATTAGE/TYPE	MOUNTING	VOLTAGE
BIAX	1	18TT5	AC – Aircraft	120
	2	24TT5	Cable (48" Standard)	277 UNV
BIAX91	1	36TT5	ST – Stem (24" Standard)	
	2	40TT5	CK – 24" Chain Kit	
BIAX92	2	50TT5		
	4	55TT5		

HOUSING

Die formed heavy gauge steel with knockouts for stems or chain hangers.

ELECTRICAL

Energy saving electronic ballasts comply with Federal Energy Efficiency standards. Ballasts are <10% THD and include 5 year manufacturer's warranty. Ballasts operate on 120V-277V (UNV) unless specified otherwise.

FINISH

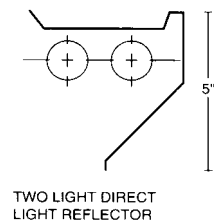
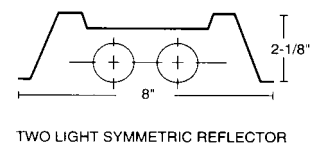
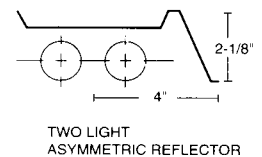
All parts finished with high gloss baked white enamel with minimum 89% reflectance applied over iron phosphate pretreatment for maximum adhesion and rust resistance.

CERTIFICATION

All units bear UL label. Made in U.S.A. Suitable for damp location. ARRA and BAA compliant.

OPTIONS:

- EM - Emergency
- DM - Dimming
- NYC – 20 Guage NYC Housing
- SA95 – High Efficiency Specular Reflector
- SA87 – Specular Reflector
- WH92 – High Efficiency White Reflector
- SR – Symmetric Reflector
- AR – Asymmetric Reflector
- LS – Wall Wash Light Shield



JOB NAME:
FIXTURE TYPE:
MODEL NO: