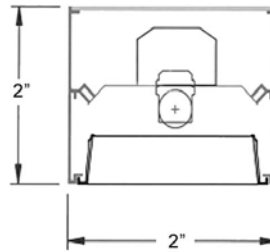


DIMENSIONS



Dimensions are subject to change. For critical applications, verify all dimensions with factory.



ORDERING

Available in nominal lengths up to 8'-0" sections, 1 lamp T5 or T8 operation, custom lengths available upon request. For continuous runs please consult factory with specific wiring instructions. Simple clean linear lines allow for this fixture to blend aesthetically into almost any space. Mounting can be accomplished using adjustable aircraft cables or rigid stems. Wall mount is also available.

HOUSING

Housing constructed of extruded aluminum.

ELECTRICAL

Energy saving electronic ballasts comply with Federal Energy Efficiency standards. Ballasts are <10% THD and include 5 year manufacturer's warranty. Ballasts operate on 120V-277V (UNV) unless specified otherwise.

DIFFUSERS

Pattern A12 acrylic lens is standard. Optional cross blade.

FINISH

All parts finished with white polyester powder coat with minimum 89% reflectivity. Standard color is white. Other colors are available upon request.

CERTIFICATION

All units bear UL label. Made in U.S.A. Suitable for damp location. ARRA and BAA compliant.

<u>MODEL</u>	<u>LAMP QTY</u>	<u>WATTAGE</u>	<u>MOUNTING</u>	<u>VOLTAGE</u>
S22	1	32T8 28T5 54T5HO	AC – Aircraft Cable (48" Standard) ST – Stem (24" Standard) WM – Wall Mount S – Surface (Direct Only)	120 277 UNV
		32T8-8TD 28T5-8TD 54T5HO-8TD		

OPTIONS:

- EM** - Emergency
- DM** - Dimming
- CC** - Custom Color
- WCB** – White Cross Baffle



JOB NAME:
FIXTURE TYPE:
MODEL NO: