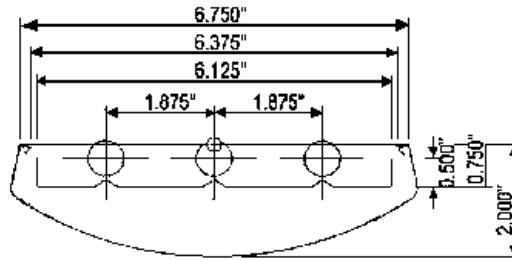


DIMENSIONS



Dimensions are subject to change. For critical applications, verify all dimensions with factory.



ORDERING

Available in 48" and 96" lengths. Designed specifically for use in retail applications where product representation is crucial. This fixture has light distribution that is also ideal for library stack lighting. Pendant, aircraft cable mounting available. Lightweight and intelligent, this fixture has been designed to assure ease of installation. Standard finish is white with custom colors available as an option. Specially designed housing and reflector system provide direct light to product shelving where it is needed most.

<u>MODEL</u>	<u>LAMP QTY</u>	<u>LENGTH</u>	<u>TYPE</u>	<u>MOUNTING</u>	<u>VOLTAGE</u>
IDT	2	48"	T8	AC – Aircraft Cable (48" Standard)	120
	3		T5		277
	4		T5HO		UNV
	6	96"		ST – Stem (24" Standard)	
	9				WM – Wall Mount
	6	144"			
	9				

HOUSING

The housing is made of lightweight rolled formed steel for durability, and modern aesthetics.

ELECTRICAL

Energy saving electronic ballasts comply with Federal Energy Efficiency standards. Ballasts are <10% THD and include 5 year manufacturer's warranty. Ballasts operate on 120V-277V (UNV) unless specified otherwise.

FINISH

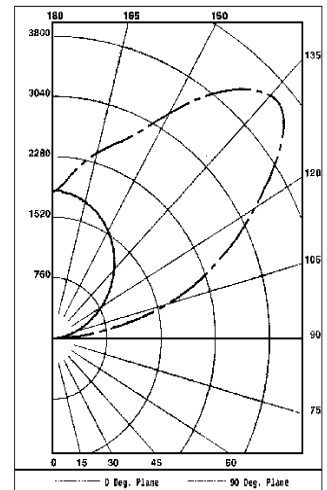
Exterior of housing comes standard in a white powder coat. Custom colors are available.

CERTIFICATION

All units bear UL label. Made in U.S.A. Suitable for damp location. ARRA and BAA compliant.

OPTIONS:

- EM** - Emergency
- DM** - Dimming
- CC** - Custom Color
- SE** - Spade End
- BE** - Bull Nose End
- SOLID** - Solid Housing
- INLAYS** - Side Cutout with Inlays
- LOUVER** - Side cutout with Louvers



CATALOG NO.: IDT-4-354
Efficiency: 94.7%



JOB NAME:
FIXTURE TYPE:
MODEL NO: