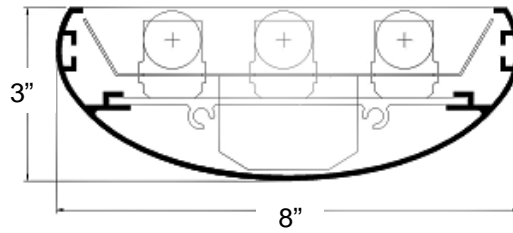


DIMENSIONS



Dimensions are subject to change. For critical applications, verify all dimensions with factory.



ORDERING

Available in 4' or 8' lengths, T5 or T8 operation. For 1, 2 or 3 lamp versions. Extruded aluminum housing with optional square or slim slots for direct/indirect distribution or solid housing for indirect distribution only. Standard fixture with unshielded indirect distribution for maximum light output. The unique, curved design of this slim profile luminaire allows it to be utilized in low ceiling applications. Fixture available in straight run, square patterns and in directional "T" with angle connectors constructed of heavy gauge metal castings. Individual fixtures are standard. For continuous row applications, row lengths must be specified. For stem or cable mounting. Matching wall mount version available.

<u>MODEL</u>	<u>LAMP QTY</u>	<u>WATTAGE</u>	<u>MOUNTING</u>	<u>VOLTAGE</u>
38ELL	1	32T8	AC – Aircraft Cable (48" Standard)	120
	2	39T5		277
	3	54T5HO		UNV
	2	32T8-8TD	ST – Stem (24" Standard)	
	4	39T5-8TD		
	6	54T5HO-8TD		

HOUSING

Housing and end plates constructed of durable extruded aluminum.

ELECTRICAL

Energy saving electronic ballasts comply with Federal Energy Efficiency standards. Ballasts are <10% THD and include 5 year manufacturer's warranty. Ballasts operate on 120V-277V (UNV) unless specified otherwise.

SHIELDING: Slots are backed by opal acrylic overlay for glare-free direct distribution.

FINISH

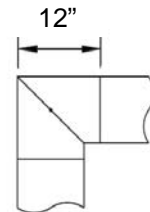
All parts finished with white polyester with a minimum 89% reflectivity. Custom colors available.

CERTIFICATION

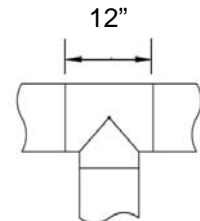
All units bear UL label, UL label for damp locations, and labeled Made in U.S.A.

OPTIONS:

- EM - Emergency
- DM - Dimming
- CC - Custom Color
- SLSL – Slim Slot Housing (80/20)
- WSSL – Window Slots (70/30)
- SOL – Solid Housing (100/0)
- 90L – 90° "L" Sections
- TIN – "T" Intersections



"L" INTERSECTION



"T" INTERSECTION



JOB NAME:
FIXTURE TYPE:
MODEL NO: