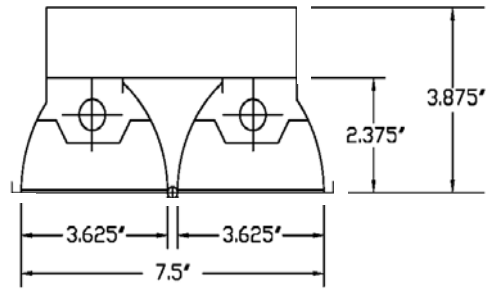




**DIMENSIONS**



Dimensions are subject to change. For critical applications, verify all dimensions with factory.



**NOW AVAILABLE IN LED!**

**ORDERING**

Available in 48" and 96" lengths. T8 and LED Lamps. Designed specifically for use in retail applications where product representation is crucial. This fixture has light distribution that is also ideal for library stack lighting. Pendant, aircraft cable mounting available. Lightweight and intelligent, this fixture has been designed to assure ease of installation. Standard finish white with custom colors available as an option. Specially designed housing and reflector system provide direct light to product shelving where it is needed most. Optional up light slots to ultimate dark ceiling look.

**HOUSING**

The housing is made of lightweight rolled formed steel for durability and modern aesthetics.

**ELECTRICAL**

Energy saving electronic ballasts comply with Federal Energy Efficiency standards. Ballasts are <10% THD and include 5 year manufacturer's warranty. Ballasts operate on 120V-277V (UNV) unless specified otherwise.

**FINISH**

Exterior of housing comes standard in a white powder coat. Custom colors are available. Optional natural aluminum and custom colors.

**CERTIFICATION**

All units bear UL label. Made in U.S.A. Suitable for damp location. ARRA and BAA compliant.

<u>MODEL</u>	<u>LAMP QTY</u>	<u>LENGTH</u>	<u>TYPE</u>	<u>MOUNTING</u>	<u>VOLTAGE</u>
HYD	2	48"	T8	AC – Aircraft	120
	4	96"		Cable (48" Standard)	277
	2	48"	LED 23W LAMPS	ST – Stem	UNV
	4	96"		(24" Standard)	

**OPTIONS:**

- EM – Emergency
- DM – Dimming
- CC – Custom Color
- NA – Natural Aluminum Housing
- UP – Uplight Slots
- SW – Split Wiring

**Shielding**

- PB – Parabolic Louver, semi-specular finish
- PS – Parabolic Louver, specular finish
- PW – Parabolic Louver, white finish



JOB NAME:
FIXTURE TYPE:
MODEL NO: