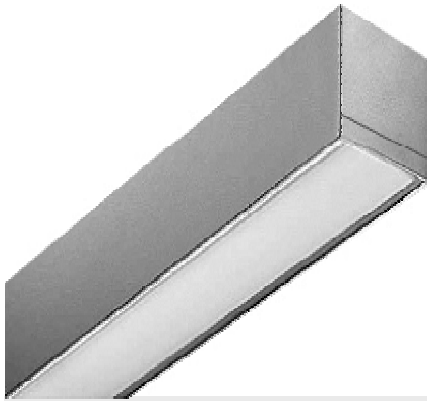


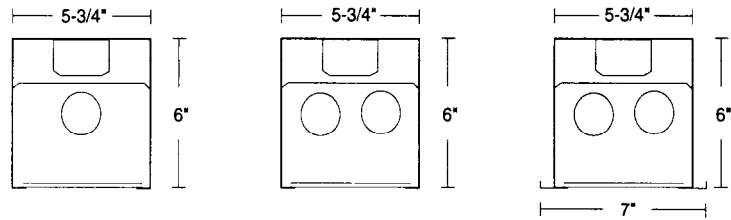
1. Recessed

Recessed Modular Luminaire

G66



DIMENSIONS



M66
Length with end trim 49-3/8"

Dimensions are subject to change. For critical applications, verify all dimensions with factory.



Available in 2', 3', and 4' lengths, 1 and 2 lamp configurations, T8 and T5. G66 Series available for installation in most standard grid and exposed T-Bar ceilings. M66 series available for installing in most mechanical and drywall ceilings. 6"x6" narrow design is architecturally preferred for installation in corridors, lobbies, and office areas. Plaster frames are available for mounting in wet plaster ceilings. Flange units are provided with adjustable lugs for ceiling and structural support. For individual and continuous row mounting. (For M66 units, specify row lengths.) Knockouts on channel end allow for through wiring or end feed. For individual or continuous row mounting. Available with energy efficient reflectors in specular aluminum (85% reflectance).

ORDERING

MODEL	LAMP QTY	LENGTH	TYPE	VOLTAGE
G66 –	1	24"	T8	120
Recessed	2	36"	T5	277
Grid		48"	T5HO	UNV
	2	96"		
	4			

HOUSING

Die formed and welded heavy gauge cold rolled steel.

ELECTRICAL

Energy saving electronic ballasts comply with Federal Energy Efficiency standards. Ballasts are <10% THD and include 5 year manufacturer's warranty. Ballasts operate on 120V-277V (UNV) unless specified otherwise.

SHIELDING

Acrylic prismatic is standard. Optional white cross baffle and parabolic semi-specular cross baffle. Refer to **Options** for additional shielding.

FINISH

All metal parts post painted with premium grade white enamel with a minimum 89% reflectance applied over iron phosphate pretreatment for maximum adhesion and rust resistance.

CERTIFICATION

All units bear UL label. Made in U.S.A. Suitable for damp location. ARRA and BAA compliant.

ADDITIONAL OPTIONS:

- Prefix M66 – Recessed Flanged
- WCB – White Cross Baffle
- ASY – Asymmetrical Distribution
- .125A – .125" Thick Acrylic Lens
- OPL – White Opal Lens
- PBL – Parabolic (Semi-Specular) Cross Baffle
- EM – Emergency Battery Back Up
- DM - Dimming Ballast
- AH – Aluminum Housing (Consult Factory)
- CC – Custom Color
- IND – Indirect
- D/I – Direct/Indirect
- SA85 – Specular Aluminum Reflector

JOB NAME:

FIXTURE TYPE:

MODEL NO:

