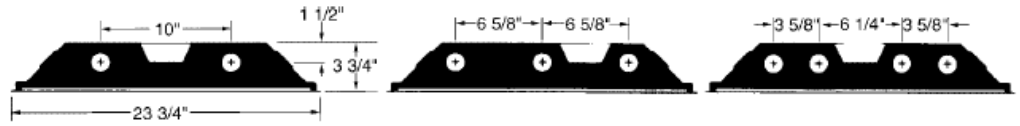


# 1. Recessed

# Premium Recessed T8 Troffer

# PT8

## DIMENSIONS



Dimensions are subject to change. For critical applications, verify all dimensions with factory.



## ORDERING

This premium grade 2x2 or 2x4 fixture is available in 2, 3, 4, and 6 lamp configurations, in T8/T5. Low Profile design engineered for the T8 and T5 Technology utilizing electronic ballasts. Flush steel doorframe hinges from either side and is secured by rotary cam-type latches. For mounting in exposed T-Bar (grid) ceilings. Optional flanged construction for various other ceiling types. Suitable for through wiring. Fixture housing flanges rolled to eliminate sharp edges Available with specular aluminum reflector (87% reflectance) high efficiency white reflector (92% reflectance) or high efficiency specular aluminum reflector (95% reflectance).

### HOUSING

Die formed heavy gauge rust inhibited steel. Unitized into one piece with mitered corners.

### ELECTRICAL

Energy saving electronic ballasts comply with Federal Energy Efficiency standards. Ballasts are <10% THD and include 5 year manufacturer's warranty. Ballasts operate on 120V-277V (UNV) unless specified otherwise.

### SHIELDING

Acrylic prismatic is standard. Consult option sheet for other shielding.

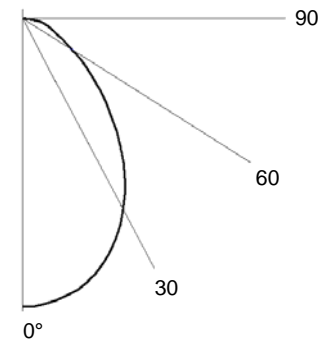
### FINISH

All metal parts are phosphate coated and painted electrostatically with baked white enamel, providing a durable finish with a minimum 89% reflectance.

### CERTIFICATION

All units bear UL label. Made in U.S.A. Suitable for damp location. ARRA and BAA compliant.

MODEL	SIZE	LAMP QTY	WATTAGE/TYPE	VOLTAGE	
PT8	2 - 2x2 unit	2	17T8	120	
		3	40BX	277	
		4	14T5	UNV	
	2 - 2x4 unit	2	2	32U6T8 24T5HO	
			3	31U(1-5/8)T8 24T5HO	
			4		
		3	2	28T5	
			3	54T5HO	
			4		



### OPTIONS:

- EM - Emergency
- DM - Dimming
- SA95 – High Efficiency Specular Reflector
- SA87 – Specular Reflector
- WH92 – High Efficiency White Reflector
- Prefix PRT – Regressed Aluminum Door
- Prefix M (MPRT/MPT) – Flange
- GSK – Neoprene Gasketed Door Frame
- 125A – 125" Thick Lens
- FAD – Flat Aluminum Door

**PT8-2-232T8-A12**  
Electronic Ballast  
Two F32T8 lamps  
Rated at 2935 lumens each

**Efficiency: 85.3%**



JOB NAME:
FIXTURE TYPE:
MODEL NO: