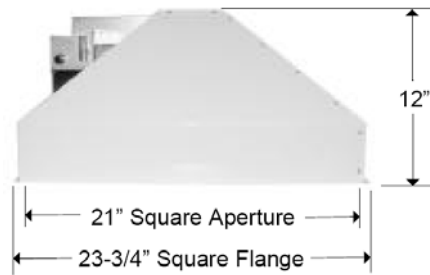
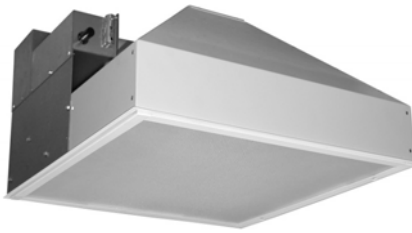


1. Recessed

2x2 Modular Design Square

R24H

DIMENSIONS



Dimensions are subject to change. For critical applications, verify all dimensions with factory.



ORDERING

Available in Pulse Start Metal Halide and High Pressure Sodium up to 400W. A full compliment of shielding media will compliment all lighting applications. Completely prewired and assembled with removable ballast assembly. Designed for mounting in 2x2 grid (T-Bar) ceilings. Flange for gypsum board ceilings is optional. Consult factory for other ceiling installations. Automatic resetting heat sensitive thermal protection device for non-IC installations protects fixture from overheating. Cold rolled steel doorframe with captive countersunk ¼ turn spring loaded fastener and concealed stainless steel hinging. Stainless steel doorframes are also available.

HOUSING

20 gauge CRS welded construction. Consult factory for stainless steel housing.

ELECTRICAL

Metal Halide 100W and High Pressure Sodium 100W-150W. High reactance autotransformer, High Power Factor, encased and potted, auto resetting type. Metal Halide 175W-400W and High pressure Sodium 250W and 400 CWA High Power Factor, encased, potted and auto-resetting type.

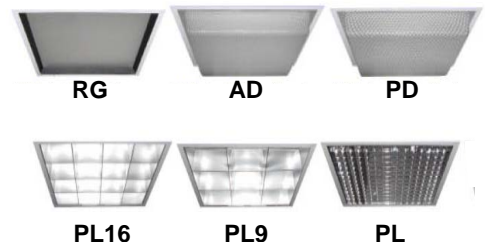
FINISH

Detergent cleaned with iron phosphate and chromic acid rust inhibitor, chip resistant, powder urethane polyester coating, electrostatically applied and baked

CERTIFICATION

All units bear UL and Made in U.S.A. label. UL listed wet location under covered ceiling. ARRA and BAA compliant.

MODEL	WATTAGE	TYPE	VOLTAGE
R24H	150	PSMH –	120
	200	Pulse Start	277
	250	Metal Halide	480
	320		MULTI
	350		
	400		
	150	HPS –	
	250	High Pressure	
	400	Sodium	



OPTIONS:

- SS – Stainless Steel Trim
- TP – Tamperproof hardware
- GLR – Single Fuse
- QZ – Quartz Restrike
- FLG – Flanged Housing (Gypsum Board Ceiling)
- TG – Tempered Prismatic Glass Lens (Standard)
- RG – Regressed Prismatic Glass Lens
- AD – Acrylic Prismatic Drop Lens
- PD – Polycarbonate Prismatic Drop Lens
- PL – Prismatic Glass Lens and ½ inch Parabolic Louver
- PL9 – Prismatic Glass Lens and 9 Cell Parabolic Louver
- PL16 – Prismatic Glass Lens and 16 Cell Parabolic Louver
- WG – Wire Guard



JOB NAME:

FIXTURE TYPE:

MODEL NO: