

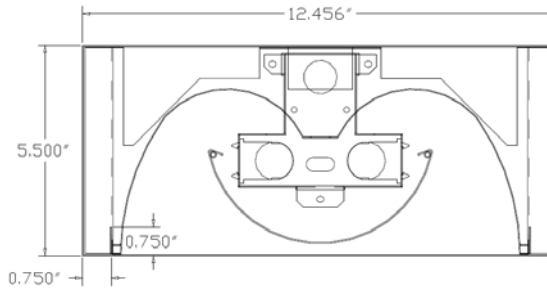
1. Recessed

1x4 Recessed Center Basket

D/I-14C



DIMENSIONS



Dimensions are subject to change. For critical applications, verify all dimensions with factory.



ORDERING

Provides direct-indirect, soft, uniform illumination. Curved perforated details combine recessed fixture advantages with efficient indirect shielding. Perforated center basket, backed with reflective white acrylic controls glare and veiling reflections. Optional high efficiency frosted acrylic diffuser available. Shielding is easily removed for re-lamping. Surface mount and flanged fixture available for drywall ceilings.

HOUSING

Die formed heavy gauge steel housing unitized into one piece.

ELECTRICAL

Energy saving electronic ballasts comply with Federal Energy Efficiency standards. Ballasts are <10% THD and include 5 year manufacturer's warranty. Ballasts operate on 120V-277V (UNV) unless specified otherwise.

SHIELDING

Perforated diffuser element with matte white acrylic overlay.

FINISH

All metal parts pretreated with a phosphate bonding process. All visible parts are post-painted with an electrostatically applied high temperature high reflectance baked matte white enamel for superior quality and durability.

CERTIFICATION

All units bear UL label. Made in U.S.A. ARRA and BAA compliant. Suitable for damp locations.

<u>MODEL</u>	<u>LAMP QTY</u>	<u>WATTAGE TYPE</u>	<u>VOLTAGE</u>
D/I-14C	1	32T8	120
	2	28T5	277
	3	54T5HO	UNV

OPTIONS:

- Prefix MD/I-14C** – Flanged Unit
- Prefix SD/I-14C** – Surface Mount Unit
- ACR** – High Efficiency Frosted Acrylic Diffuser
- EM** – Emergency
- DM** – Dimming (Specify Type)
- FA** –Frosted Acrylic



JOB NAME:
FIXTURE TYPE:
MODEL NO: