

3. Extreme Environment

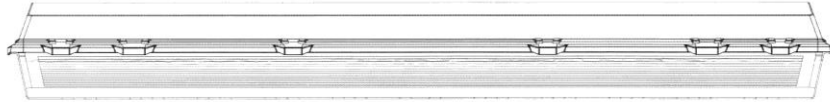
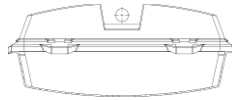
Vapor Tight Fluorescent High Bay

VFLHB

DIMENSIONS



Width: 14.61"



Width: 14.61" • 371mm Length: 51.91" • 1319mm Depth: 5.95" • 151mm

Dimensions are subject to change. For critical applications, verify all dimensions with factory.



ORDERING

Extra wide unit is available in 4 and 6 lamp T8, T5, and T5HO configurations. Weather resistant housing ideal for parking garages, food processing areas, pool areas, refrigerated storage, marinas, or any area where dirt or moisture protection is required. Optional specular reflector is engineered to provide a highly efficient wide spread distribution. Standard with white reflector. Standard with stainless steel latches. Optional tamperproof latches. For pendant mounting. Stainless steel mounting brackets reduce installation time and eliminate the need for mounting holes in fixture body. Stainless steel V hooks simplify pendant mounting with chain or cable. For individual or continuous row with flexible conduit and optional watertight hubs.

HOUSING

Heavy-duty unsaturated fiberglass reinforced polyester housing with poured in place gasketing. Flame class 5VA.

ELECTRICAL

Energy saving electronic ballasts comply with Federal Energy Efficiency standards. Ballasts are <10% THD and include 5 year manufacturer's warranty. Ballasts operate on 120V-277V (UNV) unless specified otherwise.

SHIELDING

Glass clear diffuser is molded of UV stabilized impact resistant acrylic. Optional clear UV stabilized polycarbonate diffuser available for increased impact resistance and for both elevated temperatures and extreme cold temperatures.

CERTIFICATION

All units bear UL label. Made in U.S.A. Suitable for damp location. ARRA and BAA compliant. IP67 Certified. National Sanitation Foundation (NSF) approved components. NEMA 4X rated. Factory hose-down tested at 1500 PSI, 1.4 gallons/minute @ 12-24". 5 YEAR LED WARRANTY.

MODEL	LAMP QTY	WATTAGE	VOLTAGE
VFLHB	3	FO32T8	120V
	4	F28T5	277V
	5	54T5HO	UNV
	6		

VLEDHB V2-4.7-HI FLATBOARD ARRAY UNV
LUMENS: 12,500

OPTIONS:

- EM – Emergency
- POLY – Polycarbonate Diffuser
- DM – Dimming (Specify type)
- HUB – Wet Location Hub
- SSV – Stainless Steel V Hooks
- SSMB – Stainless Steel Mounting Brackets
- TP – Tamperproof Hardware
- OC – Factory Installed High Bay Occupancy Sensor
- SS95 – Specular Silver Reflector (95% Reflectance)
- HB60Y – 5' Cable Hanging Kit (other lengths available.)



JOB NAME:
FIXTURE TYPE:
MODEL NO: