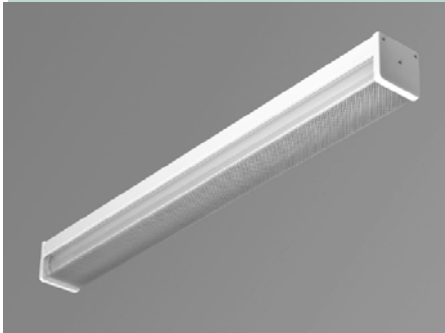


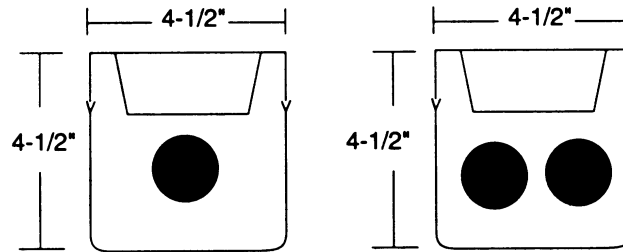
3. Extreme Environment

Vandalproof Security Luminaire

VANY



DIMENSIONS



Dimensions are subject to change. For critical applications, verify all dimensions with factory.

ORDERING

Available in 18", 24", 36", and 48" lengths, 1 and 2 lamps. 16 gauge design meets or exceeds most requirements for vandalproof lighting installation. Polycarbonate lens is standard. Overlapping end caps are secured by 3 tamperproof spanner head screws. For individual wall or ceiling mount. Can be made for continuous row mounting with optional joiner band. Mounting holes provided in housing for secure bolting to structure. Surface conduit collars optional.

HOUSING

Die formed 16 gauge cold rolled steel. Ends are 16 gauge overlapping type.

ELECTRICAL

Energy saving electronic ballasts comply with Federal Energy Efficiency standards. Ballasts are <10% THD and include 5 year manufacturer's warranty. Ballasts operate on 120V-277V (UNV) unless specified otherwise.

SHIELDING

.125 thick polycarbonate with tongue and groove fit to housing. DR Hi-Impact acrylic is optional.

FINISH

All parts painted with premium grade white enamel with minimum 89% reflectance applied over iron phosphate pretreatment for maximum adhesion and rust resistance.

CERTIFICATION

All units bear UL label. Made in U.S.A. Suitable for damp location. ARRA and BAA compliant. Listed for damp location.

<u>MODEL</u>	<u>LAMP QTY</u>	<u>WATTAGE/TYPE</u>	<u>VOLTAGE</u>
VANY	1	F15T8	120V
	2	FO17T8	277V
		FO25T8	UNV
		FO32T8	
		F40TT5BX	
		(Consult factory for T5 applications)	

OPTIONS

- EM** – Emergency
- DR** – DR Acrylic Lens
- TSD**– Tamperproof Screwdriver
- SC** – Surface Conduit Collar

JOB NAME:

FIXTURE TYPE:

MODEL NO:

